



# STUDIO RENTAL

## SPECIFICATIONS

- 34' x 55' Sound Stage with 18' Ceiling
- 15' to Bottom of Grid
- Large Radius Cyclorama & Corner Cove

## FEATURES

- Stage Access: 12' Roll-Up Door & Standard Door onto Stage
- Two Dressing Rooms with Make-Up Areas
- Two Restrooms
- 1 Shower
- High-Speed WiFi
- Pre-Built "Executive" Office Set Available
- Access to 150MB Broadband for Live Streaming or Upload

## LIGHTING+GRIP<sup>1</sup>

- Kino Flo, Mole Richardson & Arri HMI Lighting Packages
- Overhead Chimera F2 Lighting Bank
- Chapman Super PeeWee IV Dolly
- Full Grip Package including Dolly Track
- 20' x 20' Blue or Green Screen
- Teleprompter

## RATES

**Build Day: \$500**

**Shoot or Pre-Light Day: \$900**

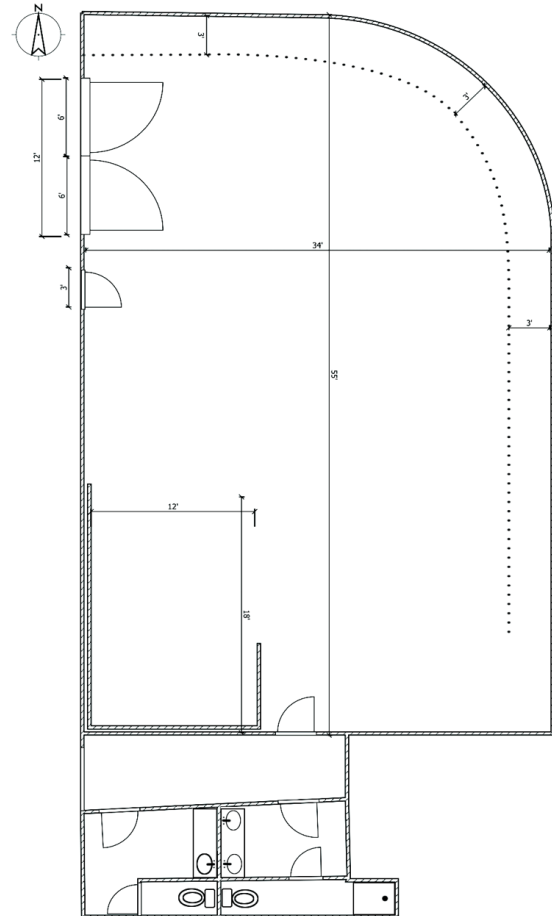
- Includes \$100 flat rate for utilities & distribution package
- Our stage is available from 7 a.m. until 7 p.m. Monday - Sunday<sup>2</sup>
- Earlier or later start/wrap hours may be possible
- Rental is based on 10-hour day
- After 10 hours, an overtime rate of \$100/hr. will be added to the final invoice

**Strike Day: \$550**

- Studio walls are painted studio white
- Studio floor is rented "as is"
- Walls & floor can be painted or touched-up at additional charge

<sup>1</sup>There is no charge for bringing in your own grip/electric package. Our electrical distribution is pin & Edison with two 100 amp stage boxes. Lighting and grip rental available for sound stage shoots only.

<sup>2</sup>On weekends, if you are new to our sound stage, we ask that you employ one of our vetted freelancers (grip/electrics), who will be able to open & close the facility & act as a studio manager on our behalf.





# LIGHTING & GRIP RENTAL

AVAILABLE FOR STUDIO RENTALS ONLY

## TUNGSTEN PACKAGE

Flat Rate: \$350

Item	Quantity	Includes:
1K Baby	4	Stand
2K Baby	3	Stand
4K Open Face	1	Stand
5K Baby Jr.	3	C-Stand with Barn Doors
Arri 300 Betweenie	4	C-Stand with Barn Doors
Arri 650 Tweenie	4	C-Stand with Barn Doors
200W Tiny	4	Stand
2K Softlight (18" x 18")	2	Stand
Double Broad Altmans (Cyc Lights)	6	
Chimera - Large 4' x 6'	1	Ring
Chimera - Medium	1	Ring
Chimera - Small	1	Ring
Basic Gripology: Apple Boxes, Sand Bags & Cribbing		

## BLUE/GREEN SCREEN PACKAGE

Flat Rate: \$350

Item	Quantity	Includes:
Kino Flo Image 85	2	Green or Daylight Tubes on Roller Stands
20 x 20 Green or Blue Drop (Reversible)	1	

## LIGHTING AVAILABLE BY FIXTURE

Item	Quantity	Day Rate	Includes:
Kino Flo Image 85	2	\$200	Tungsten or Daylight Tubes & Roller Stand
4' Bank	1	\$125	Tungsten or Daylight Tubes & Roller Stand
Diva 200	4	\$65	Tungsten or Daylight Tubes & C-Stand
F2 10' x 20'	1	\$400	Tungsten
Biax 8	1	\$100	Roller Stand



# LIGHTING & GRIP RENTAL

AVAILABLE FOR STUDIO RENTALS ONLY

## ADDITIONAL GRIP

Item	Quantity	Day Rate
6' x 7.5' Portable Green Screen	1	\$50
20' x 20' Reversible Green or Blue Screen	1	\$125
12' x 12' Silk	1	\$30
12' x 12' Frame	1	\$35
GoJaks - Car	4	\$100 for Set of 4
GoJaks - SUV	4	\$125 for Set of 4

## TELEPROMPTER

Item	Quantity	Day Rate
Teleprompter Package includes laptop with Presentation Prompter software	1	\$275
Operator	1	TBD